



Douglas County Master Gardeners



October 2009

Volume 24, Number 10

YOUR PRESIDENT'S COLUMN

The 2009 – 2010 chapter officers have been installed and have conducted their first general meeting. As I looked back through past Douglas County Master Gardener Newsletters, I had to chuckle. In August of 2003 our President Roger Sawyer writes, “This does not alter the fact that change will have to take place,” referring to Winter Program changes, membership growth and our every changing Discovery Garden. In October of 2004 our President Chuck Aiello writes, “It is said change is constant,” referring to the installation of new officers and their taking over their responsibilities.



In October 2006 our President Elaine Moriarty wrote to us about the changes going on with Pitchford Boys Ranch. In September of 2008, Elaine wrote of the changes to the extension services as we all worked hard to establish the service district here in Douglas County. So as you can see we are constantly in change as we move forward.

Your new officers are here to serve you and the Master Gardener Program. Thank you to all of you who attended the general meeting at the Discovery Garden. As I told them, we should all be proud of what we have accomplished for our community. Many hands and hours have gone into making a wonderful showcase of what you all care for. We discussed several items that will begin to change our organization. I introduced Mary VanAssche our first online graduate. Liz Zamba, our new vice president, told us that next month we will have our 1st salsa taste off, with continuing education on salsa making and recipes. Our community outreach has certainly

changed from years ago. Leo reported on 7 different presentations in September. WOW!!!

Roger’s quote was right on as we discussed the progress of getting our newsletter on line and all the changes that this will bring. Our committee will be meeting and coming up

with plans for a smooth transition. You will continue to get a copy in the mail for a few months as we make the decisions. If you have ideas to share, get a hold of Ted Benice, Roger Sawyer, Larry Sutton or Elaine Moriarty. Let Mary Hoffman know if you are unable to receive the Newsletter on line.

Thank you Bob Brindley for the 2nd Annual Tomato Taste Off. We had many varieties to sample and we all wait anxiously for the results.

This time of the year as always is when we begin to make plans for our next year’s budget. Please remember to get your figures to Karolyn Riecks by October 1st. We will be spending a large amount of our meeting on October 14th preparing a budget for 2010. That meeting will begin at 9:30 am, another change.

Please put November 7th on your calendar. You are all invited to put on your non-gardening clothes and bring your spouse, family or friend and join us at the Annual Awards Banquet. It is a time when we share another fine meal, partly at the expense of the

(Continued on page 4)

Inside this Issue	
	Page
Stewardship Program	2
Lasagna Mulching	3
MG News	4-5
Tomato Taste=off	6-7
General Meeting	8-10
VP Report	10
Treasurer’s Report	10
Officers and Committees	11

OUR MISSION

- EDUCATE HOME GARDENERS IN THE DOUGLAS COUNTY AREA WITH THE MOST PRACTICAL AND SAFE HOME
- HORTICULTURAL PRACTICES BASED ON A PROGRAM OF KNOWLEDGE UPDATE AND REGENERATION, AND,
- CREATE AN ATMOSPHERE OF ENJOYMENT FOR ALL

Your President's Column continued

chapter, and give recognitions to all who have contributed to the progress of this organization. Betty Ison will be in charge of the awards, Philece Humphrey will be organizing the dinner piece of the evening and I will try to add a little part. We hope you all consider coming to the First United Methodist Church at 5 pm for a wonderful evening.

As I told everyone, the saying it takes a village, certainly applies to our organization. Thanks to those of you who stepped up to put your names on committee positions that needed to be filled. If you want to become more active in the daily working of Douglas County Master Gardeners, please give me a call and we will discuss the many opportunities that exist for you to do just that. This organization is only as good as all of you and it needs us all.

Hope to see more of you at the October Continuing Education and General meeting at the Annex, October 29th, 9am..

Sincerely
Judy Huntley



Master Watershed Stewardship Program is Coming this Fall

The Oregon State University (OSU) Master Watershed Steward (MWS) course is returning to Douglas County. Back by popular demand, this course is sponsored by: OSU Extension Service, Partnership for Umpqua Rivers, and the Oregon Watershed Enhancement Board (OWEB). Classes will meet at Umpqua Community College in Roseburg from Oct. 14 to Dec.11, 2009.

The MWS course provides practical watershed education to landowners and other community members interested in watershed stewardship. Taught by OSU professors and other natural resource professionals, the course combines principles with applied examples in a variety of land-use types. Each session includes classroom time and field trips to local watersheds.

Eight topics are included: Watershed and Stream Processes; Riparian Area Functions & Management; Water Quality Monitoring; Working Together to Create Successful Groups; Wetland Evaluation and Enhancement; Soils, Erosion, and Conservation; Salmonid Biology; and Stream Assessment and Restoration.

The course fee of \$75 includes field trip transportation and a resource notebook. Scholarships are available. For more information on the MWS program, see the OSU Watershed Extension web site at <http://seagrant.oregonstate.edu/wsep/>.

For a detailed course schedule check the web at: <http://extension.oregonstate.edu/douglas/dcmws>, or to register by Oct 2 by 12:00 pm/Noon, call the Douglas County OSU Extension Office at 672-4461 or 800-883-7568 or e-mail holly.burton@oregonstate.edu to register.

**Have YOU submitted a recipe for
the COOKBOOK????
Plant Clinic: Forms and RECIPE BOX**



Create vegetable beds with 'lasagna' mulching

EUGENE, Ore. – Digging up sod to start a garden can be difficult, as Michelle Obama demonstrated recently on the White House grounds. The First Lady might have used an easier way to turn lawn into garden, given more time.

Gardeners call it "lasagna" mulching. Famous for its layering technique, it's also called sheet composting.

Patience is the key, according to Cindy Wise, coordinator of the Compost Specialist Volunteer Program at the Oregon State University Extension Service in Lane County.

"There are several advantages to sheet composting and it's an easy way to start or expand a garden with a minimum amount of equipment, material and time," Wise said, "but it is a slow process that can take six months or longer to decompose enough to allow planting."

In other words, plan ahead. Although fall is an excellent time to start, spring and summer are good times to begin using, instead of trashing, organic materials from the yard. The method's alternating layers of nitrogen and carbon materials also can be used to improve soil or add to existing beds and borders, Wise said.

Common nitrogen sources are coffee grounds, kitchen scraps, composted manures, alfalfa pellets, vegetable scraps, fresh grass clippings and cottonseed, soybean and blood meal.

Carbon sources are sawdust, leaves, corn stalks, pine needles, peat moss, newspaper, cardboard, straw and hay.

"Begin by mowing or scalping as low as possible grass or other vegetation in the area you choose and loosen the soil with a spading fork to improve drainage," Wise advised. "Remove persistent weeds such as blackberry, bindweed, morning glory or quackgrass that composting might not smother."

Cover the ground with four to six overlapping layers of cardboard or newspaper (black ink on newsprint only) to keep out light and eliminate vegetation underneath. Wet the newspaper or cardboard thoroughly and cover with a thin, one-inch layer of a nitrogen source such as manure.

Top the nitrogen layer with an inch of leaves, straw, bark or other carbon material.

Add another inch of nitrogen, then another of carbon, another of nitrogen and a top layer of carbon. The final layer can also be covered with an overlapping



The beginnings of a lasagna mulch. Workshop participants lay down manure over thoroughly wet cardboard, to be followed by a layer of leaves, straw, bark or other carbon material. Alternate layers of nitrogen and carbon are added,

layer of burlap coffee sacks to keep the materials in place. The burlap will decompose over time.

"If the pile gets too wet, loosely cover it with a sheet of black plastic, weighted down at the sides," Wise said. "This also will help warm the pile, encourage faster decomposing and prevent losing nutrients during heavy rains."

Continue to add layers as materials become available, and always end with a carbon layer on top. "This is the blanket that discourages flies from laying eggs on exposed nitrogen such as kitchen scraps," she said.

A bed is "finished" and ready for planting when the layers have decomposed to the point that the original materials are no longer recognizable and look and smell like fresh earth. "You can dig down through the layers to plant seeds or seedlings, or turn over the new bed, although it's not necessary," Wise said.

"You also can screen a two-to-three-inch layer of good compost over the top of the bed and plant seeds in it."

The composted material will need to be replenished as it is "consumed" by your plants. Leave six inches open around plants so they won't come in contact with fresh, decaying organic matter.

For more information and classes on sheet and other composting, go to the Web site for [Home Gardening](#), written by OSU Extension Service in Lane County, or check out your local OSU Extension Service office.

By: [Judy Scott](#)
Source: Cindy Wise

Find this article and more at OSU Extension Gardening Encyclopedia link:
<http://extension.oregonstate.edu/gardening/>

MG News

(Re-printed from the September newsletter as a reminder. Ed.)

We will have our first salsa taste-off after the general meeting back at the annex in October. So far (I'm still open for suggestions), we will have three categories--red, green, and fruit. Depending on the number of entries we may break those down into mild, medium, and hot. Prizes will be given at least to the top salsa in each category. To help me organize this taste-off, could you please email me at oregongeezer@yahoo.com or call me at 459-7897 with your entree(s) categories. I will be out of town from September 11 till September 22 so I may not be able to respond back to you until I return. Bob Brindley

Community Outreach: First, a belated thanks to all who worked at our Douglas County Fair booth. The fair is always a good chance to connect with our community.

September has been a busy month for us: Sam Bennett presented his vegetable gardening program to the West Slope Garden club, thanks Sam.

Bob Brindley, our number one bug man, gave a talk on bugs to the 'Conference on Extraordinary Living', at UCC. I'm sure our beneficial insects really appreciate Bob. Mary Asche, a new MG, did a great presentation on Roses to the Ten Mile Garden Club. Mary completed the MG course on line, and wants to be an active part of the Community Outreach Team. Welcome Mary. Larry Sutton gave the 'News Review' a tour of the garden, I hear we should expect a feature story soon. Larry also escorted a group of gardeners from Bend on a tour of the garden. Great job Larry. The Ten Mile, and Lookingglass Garden Clubs have also taken tours of our garden this month, it's always a pleasure to show off our handiwork.

I've had a request for a presentation on 'fertilization', it's for the Glide Garden Club, in February, if your interested, let me know. Thanks to all of you for your excellent work...Leo

VICTORY GARDEN

Due to popular demand, there will be a Victory Garden next year. Gale Robinson will till the ground so we can plant a winter cover crop this Fall.

Thank you so much, Gale.

I will be passing out a clipboard at Chapter meetings asking for volunteers for various activities. I still have lots of seeds that some of you so graciously gave when we thought we would have this up and running last year. I will be asking for donations of seeds and plants for next Spring so keep this in mind when you are purchasing those things for your garden. It's never too early to start planning, as many of you know.

If you have any questions, suggestions or just want to say "Go Girl", call me or email me at efmoriarty2@gmail.com

Elaine



LOST

On Wed., 9/23/09 I accidentally left my Canon digital camera in a black case hanging on the sign at the entrance to the Easy Access Garden, which is the vegetable container garden. By the time I realized it the next morning, it was gone. I was taking pictures for possible use in our MG/MFP Cookbook. If anyone hears anything about the whereabouts of my camera, I do hope they'll help me find it.

Linda Thames
Cell# 541-430-8424

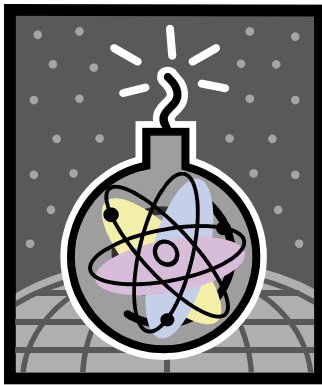
MG News

BAKE SALE - November 21

It's not too early to be planning for our November Bake Sale at Sherm's Market.. Yvonne Henderson who is heading the committee did get us the best date, Saturday, November 21, 2009 from 9 - 2. She will have a work sign up sheet at our Oct. meeting. Please help by signing up to work at the sale and also think of what wonderful baked goods you can contribute.

Yvonne has given me permission to put her phone number in this message. She can be reached at 541-839-6330.

Linda Thames
Bake Sale Committee Member



The DEADLINE for cookbook entries is FEBRUARY 1, 2010 !

Please get your recipes into the cookbook and "be published".

Forms and box that says "RECIPES" are in the Plant Clinic

HALLMARK

It was my mistake not having mentioned at our August meeting that the daughter of Laverne Bailey lost her long fight with cancer. I'd sent Laverne a sympathy card from our membership and she sent a very nice Thank You. I did not realize my oversight until the September meeting when I mentioned the Thank You and found many had not heard the sad news. I apologize to everyone.

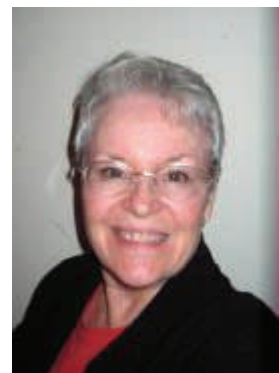
I also found out recently the equally sad news that Bill Town's wife, Sally had passed away after a sudden illness. Any MGs who attended meetings at their home in Scottsburg will remember their beautiful property, incredible gardens and Bill's handmade yard art, some of which also graces our Discovery Gardens. Just so you'll know, friends in Scottsburg have set up a scholarship fund in Sally's name through her quilting group, The Material Girls. If any MGs wish to add to that fund, please sent any gifts to The Material Girls, 1003 Scottsburg West Rd., Scottsburg, OR 97473. Sally was a teacher at the coast for many, many years. She supported this unofficial scholarship program that has benefited students in their small community for the past several years and now the scholarship has been dedicated to her memory.

I sent a Thank You to the guests we had at our September meeting from Josephine County Chapter of Master Gardeners. Al Cook, Sandy Stephens, Pattye and Craig Ingram presented us with a gift of a lovely tree that will be a beautiful addition our Discovery Gardens.

I am still hoping that whoever found my camera in the raised beds garden on Wed., 9/23 will return it to me.

If you know of any MG you think would appreciate receiving a card, please let me know.

Linda Thames
linbill2@charter.net
541-673-3978



Tomato Taste-off Results

Bob Brindley

The following tomatoes were the favorites in our taste-off this year. For their efforts, the growers received coupons to spend on plants in our greenhouse. The rewards were \$15 for first, \$10 for second, and \$5 for third.



Paste: 4 entries

1. P4, Amish Paste, Jim Leet (23 votes)
2. P2, Opalaca, Linda Thames (4 votes)
3. P3, Health Kick, Jim Leet (2 votes)

Note: Although Opalaca has won second place in both of our tastings, neither Jim Leet nor Linda Thames recommend you grow it! The problem is that you lose a great deal of your crop to disease.

Non-red Slicing: 2 entries

1. NR2, Green Zebra, Jim Leet (18 votes)
2. NR!, Lemon Boy, Jim Leet (7 votes)

Note: Of the 38 people that participated in the tasting, only 25 tasted the non-red slicing. People still have problems believing a tomato that isn't red or, at least, orange can taste good.

Cherry: 6 entries

1. C6, Sungold, Jim Leet (14 votes)
2. Tie
C4, Sungold, Linda Thames (9 votes)
C2, White Currant, Debbie Haynes (9 votes)
3. C5, Sweet Baby Girl (4 votes)

Note: The people who didn't vote for Sungold, in general, preferred a tarter cherry tomato; Sungold was considered to be too sweet.

Red Slicing: 19 entries

1. R19, Purple Cherokee, Marjorie Orr (7 votes)
2. R18, Tiffen Mennonite, Marjorie Orr (6 votes)
3. Tie
R17, Morton, Marjorie Orr (4 votes)
R7, Peron Sprayless, Lori Salars (4 votes)

Note: The first three tomatoes in this category were also entered by other growers but when the votes were added together, it did not change the order of the winners. But Celebrity, which also was entered by two people, would have also tied for third place. Last year Purple Cherokee, which was entered by Karolyn Riecks, won 2nd in the Non-Red Slicing. Since it is easily distinguished from other red slicing, maybe next year I should put it back in Non-Red. Anybody have any opinions?

Some people found tasting 19 tomatoes in this category a little daunting. Success required tasting all 19 while marking down your favorites, then going back to taste those favorites again or re-tasting all 19.

Continued on the next page

Tomato Taste-off continued from previous page

Here is the complete list of tomatoes tasted:

Paste:

- P1 Roma, Linda Thames
- P2 Opalaca, Linda Thames (2nd in 2008)
- P3 Health Kick, Jim Leet (1st in 2008)
- P4 Amish Paste, Jim Leet

Non-red:

- NR1 Lemon Boy, Jim Leet (1st in 2008)
- NR2 Green Zebra, Jim Leet

Cherry:

- C1 Cabenet, Julie Agee
- C2 White Currant, Debbie Haynes
- C3 Brown Berry, Lori Salars (1st in 2008)
- C4 Sungold, Linda Thames (3rd in 2008)
- C5 Sweet Baby Girl, Jim Leet (2nd in 2008)
- C6 Sungold, Jim Leet

Red Slicing:

- R1 Stupice, Karolyn Riecks (3rd in 2008)
- R2 Brandywine, Lori Salars
- R3 Siletz, Lori Salars
- R4 Purple Cherokee, Elaine Moriarty
- R5 Celebrity, Elaine Moriarty
- R6 "Shirley's Toms", Linda Thames
- R7 Peron Sprayless, Lori Salars (1st in 2008)
- R8 Fantastic, Shirley Purcell
- R9 Brandywine, Elaine Moriarty
- R10 Better Boy, Shirley Purcell
- R11 Big Beef, Elaine Moriarty
- R12 Moreton, Elaine Moriarty
- R13 Siletz, Elaine Moriarty
- R14 Tiffen Mennonite, Jim Leet
- R15 Ace, Jim Leet (2nd in 2008)
- R16 Celebrity, Jim Leet (3rd in 2008)
- R17 Morton, Marjorie Orr
- R18 Tiffen Mennonite, Marjorie Orr
- R19 Purple Cherokee, Marjorie Orr



Most of last year's winners felt this year was a more difficult year for growing tomatoes and taste was effected. Jim Leet who grows tomatoes to sell at the Farmer's Market in Roseburg every Saturday, thinks the hot spell we had may have been the worst culprit.

Thanks for everyone who brought tomatoes and I hope you tasters enjoyed yourself. Remember we will be tasting salsa after the October meeting. Prizes will be awarded for best salsa--join the fray.

DCMG GENERAL MEETING

September 24, 2009

The meeting was called to order by President **Judy Huntley**, at 10:04 AM, at the Discovery Garden Pavilion. Approximately 56 members and 6 guests were in attendance.

President, **Judy Huntley**, introduced **Mary Van Ashe**, the first Internet Master Gardener. Also introduced were **Fred Rhodes** and his brother, **Roger Rhodes**. Other invited guests were not present. **Gail Langeletto** wrote an email saying she was sorry to miss our meeting as her wedding is on the 26th.

Officer Reports

Membership: **Mik Carlson** reported that there were 276 paid members. There was a question about reinstating past members and determining payback hours. **Roger Sawyer** said that the past records are the source of information and that payback hours for the past are difficult to determine

OMGA Representative: **Carolyn Register** asked who was interested in a copy of the OMGA Quarterly Newsletter. It was mentioned that it is on the internet.

Treasurer: **Karolyn Riecks** reported that the Overall Total funds are \$25,267.86 Income was \$292.59 from plant and compost tea sales. The Expenses were \$2710.05 of which the largest expenses were Greenhouse plumbing and water. She requested the budget items from the various Committee and Garden Chairpersons by October 1st. The Budget for 2010 will be reviewed at the October 14th. Board meeting. It was announced that the Executive Board meetings will start at 9:30 AM and that any member is welcome.

Vice President: **Liz Zamba** said that Continuing Education, at the October General meeting, will be presented by **Joni Leet**, Master Gardener and Master Food Preserver. She will talk about making salsa and preserving salsa in a safe manner. **Liz Zamba** asked for ideas and resources for Continuing Education programs.

President: **Judy Huntley** said she would request agenda items via email. She passed around a listing of Committees and their Chairpersons requesting any changes or additions/subtractions be noted. She said everyone is important to our organization and it takes all of us to make it work.

Committee Reports

Community Outreach: **Leo Grass** said there were three presentations given to various gardening groups and several Discovery Garden tours. He said there would be a column in the News Review on the Discovery Garden. It was noted that the article was to be this Sunday. There was a request for more information on the history of the Discovery Garden and **Judy Huntley** mentioned a Power Point presentation she saw in our booth at the DC Fair. The Power Point presentation is on CD and in the notebook. Contact **Leo Grass** to obtain the Power Point.

Plant Clinic/Farmers' Markets: The Plant Clinic is open in October on Monday, Wednesday and Friday. In November the days will change to Monday and Wednesday.

Discovery Garden: **July Stanbery** noted that the Pavilion lights were on. The funds for the lights were contributed by, Emeritus Member, **Dorothy Roberts**. **Noel Groshong** has been leading the irrigation project and has started a "retirement" job, but he will continue to lead the members of the crew: **Richard Johnstone, Jim Ivy, and Dave Hopkins**. The next part of the irrigation project is around the Entry Garden. After that the Children's Garden, Japanese Garden, the Orchard and the Ornamental Garden will be done. These will be on a different feeder water line than the rest of the garden. The last scheduled DG workday was last Tuesday. There will be other workdays and these dates will be sent to everyone by email. There will be a workday to move some rocks from the rock "water river" in the Japanese Garden. If an organization uses the pavilion for crafts, painting must be done outside the pavilion so the pavilion floor does not get paint on it. Watering once a week will continue until the rains start, then it will be on an as needed basis.

Awards: **Betty Ison** has this month given 60-hours swinger bars to: **Debra Gaedeke, Hank Krohn, Cindy Rich, Barbara Robinson, Toni Rudolph, and Teri Stehlik**.

Continued on next page

Hallmark: **Linda Thames** reported that the wife of **Bill Town, Sally Town**, died this last month. **Bill Town** made the rebar garden art in the DG. The MGs toured the Town's home in Elkton recently. A scholarship in her name is being started and the information will be in the Newsletter.

Publicity: **Teresa Saylor** is the new Publicity Chairperson and she requested that information about events that should be advertised be sent to her and that each Chairperson let her know the date of the yearly events so she can make a timeline.

Plant Sale: **Gloria Amorde** requested that those interested in buying plants at the after meeting plant sale allow a 45 minute delay so workers can eat.

Old Business

Newsletter: **Ted Benice** talked about the Editor's guidelines regarding Privacy in the Online Newsletter. **Judy Huntley** said a committee is going to meet and handle the problems discussed regarding the Online Newsletter. **Roger Sawyer** is the Chairperson of the committee. The Newsletter will continue on paper for October and November and it will be published Online. Contact **Mary Hoffmann** to continue to receive a paper Newsletter after November.

Awards Banquet: **Philece Humphrey** reported that the Awards Banquet is on November 7th, a Saturday, at the First United Methodist church on Harvard. She passed around a sign-up sheet. The main course, provided by MGs, is Teriyaki chicken and potatoes. . MGs are to bring salads, desserts or bread.

Time Keeping System Online: **Judy Huntley** said that the system information is not available (as was announced last month), but when we do time keeping online we will continue with paper as backup (for a time until we see how it is working.)

Induction of Officers: **Jack Wright** swore in the OMGA Representative, **Carolyn Register** and the Alternate OMGA Representative, **Robyn Thompson**.

New Business

Judy Huntley said the OMGA was having a training opportunity in Roseburg on October 24th. It covers financial information and other items. More information is forthcoming.

Yvonne Henderson has volunteered to head the Fall Bake Sale.

Elaine Moriarty talked about the plans for the Victory Garden. She said that the land to the east of the new greenhouses will be plowed and a cover crop planted so that the garden will be ready for spring planting. Needed are committee members. The garden needs a budget item. There will be a grant sent to Home Depot since the garden may fall under the "community garden" description needed for the grant.

Marjorie Orr gave the President a CD with pictures from Mini-College to review.

Bob Brindley gave directions for participation in the TomatoTaste-off.

Elaine Moriarty introduced **Patty and Craig Ingram** and **Al**, who are from Josephine County Master Gardeners. They presented the DC MGs with a conifer of unknown designation.

Announcements

The **Mentor Training meeting** is September 30th at 10AM in the Extension office kitchen.

The **Diagnostics Group meeting** is October 21st at 10AM in the Extension office kitchen.

The next **Executive Board meeting** is October 14th at 9:30AM in the Extension office kitchen and the **General Meeting** is October 29th in the Extension Annex with Continuing Education at 9AM and the meeting at 10AM.

The **November Executive Board meeting** is November 4th at 9:30AM and the **November General Meeting** is November 19th with Continuing Education at 9AM and the meeting at 10AM. Please note the November date changes.

Show and Tell

Roger Sawyer showed a plant staking system and a tomato planter. He has others in the Plant Clinic to give

away. These items were contributed by a lady who appreciates the Plant Clinic information. **Lauren Campbell** showed a Kincho melon she grew in her garden. She likes to try one new fruit or veggie each year. She doesn't think she would grow these melons again as once it is peeled and seeded there is little fruit left and it's very fibrous.



The meeting was adjourned at 11:21 AM

Respectfully submitted: **Maureen Benice** - Secretary

Hello Fellow Gardeners,

We had a great meeting this last Thursday at the Discovery Gardens, the potluck once again the highlight of the Chapter Meeting. I want to thank Bill Howitt and Roger Sawyer for helping me set-up. It was a great summer with wonderful meetings at members homes, thanks to all who hosted us.

Next month we will go back to having our meetings at the courthouse annex, starting at 9:00 AM with the Continuing Education. Since we will be having Bob's Salsa Taste-Off the Continuing Education will be also center around salsa. Joni Leet who is both a Master Gardener and a Master Food Preserver will be speaking on making and preserving salsa, safety tips and recipes. Joni is the dietician at Mercy Shaw Heart Center Cardiac Rehabilitation.

I would like to request help with the Continuing Education. I need not only suggestions for topics, but, also the resources. Do you know anyone who might like to do a presentation?



Liz Zamba
elizabethjpayne@hotmail.com

Treasurer's Report
As of 9/24/2009

Account Balances

CD - Reserves - \$4,234.59
Checking - \$2,547.02
Money Market - \$20,291.96
Reserves - \$300.00
Bulk Mail - \$111.87

Total \$27,485.44



Income for the month was \$749.09 with \$564.50 coming from Plant Sale and \$150.00 from Compost Tea. Expenses for the month were \$3,048.31 with the majority coming from greenhouse plumbing (\$800.00) and HLC Water bill (\$1,238.48).

Karolyn Riecks, Treasurer

OFFICERS

President Judy Huntley
Vice President Liz Zamba
Secretary Maureen Benice
Treasurer Karolyn Riecks
OMGA Representative Carolyn Register
Alternate OMGA Rep Robyn Thompson
Membership Mik Carlson
Past President Elaine Moriarty

COMMITTEES

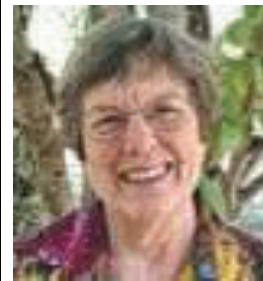
Awards Betty Ison
 Awards Banquet Philece Humphrey
 Plant Clinic Judy Mercer
 Computer Support Roger Sawyer
 Compost Tea Shirley Purcell
 Discovery Garden Julie Stanbery
 Farmers Market Debbie Haynes
 Kruse Market Carolyn Register
 Brosi Market Geri & Doug Johnson
 Greenhouse Work Tasha King
 Greenhouse Structures Philece Humphrey
 Hallmark Linda Thames
 Historian Marjorie Orr
 Horticultural Learning Center Roger Sawyer
 Insects Bob Brindley
 Library Carol Gray
 Community Outreach Leo Grass
 Plant Sale Gloria Amorde, Chuck Aiello, Bob Brindley
 Theresa Saylor
 Leo Grass
 Publicity Patti Langille
 Soil Testing Geneva Croft
 Field Trip Coordinator Charlotte Herbert
 Website Ted Benice
 Winter Program Yvonne Henderson
 Mentors- Winter Program Cindy Rich, Bob and Julie Agee
 Newsletter Editor Shirley Purcell
 Bake Sale Pamela Barrows and Roger Sawyer
 Trash to Treasures Lorenna Remington
 Communications/Emails Diane Aiello
 Hours Data Bob Brindley
 Beverages/Hospitality
 Mailings
 Tomato, Salsa Taste-off
 Photographer



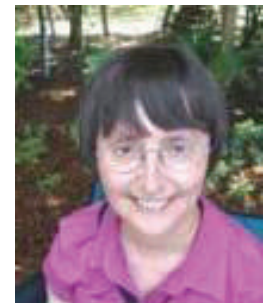
Judy Huntley



Liz Zamba



Maureen Benice

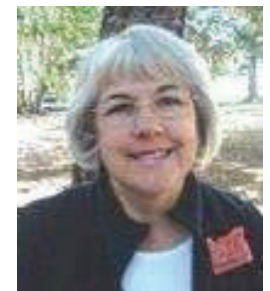


Karolyn Riecks →

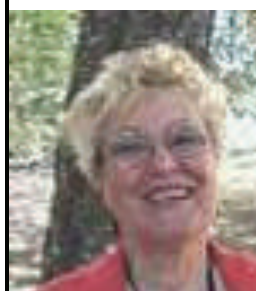
Carolyn Register and Robyn Thompson being Sworn in by Jack Wright



Mik Carlson →



Elaine Moriarty



**Douglas County
Master Gardeners
Newsletter**

1134 SE Douglas Ave.
Roseburg OR 97470
541 672 4461
1 800 883 7568

OREGON STATE UNIVERSITY EXTENSION SERVICE

Oregon State University Extension Service offers educational programs, activities, and materials without regard to race, color, religion, sex, sexual orientation, national origin, age, marital status, disability, and disabled veterans or Viet Nam Era veteran status as required by Title VI of the Civil Rights Act of 1964, Title IX of the Education Amendments of 1973, and Section 504 of the Rehabilitation Act of 1973. Oregon State University Extension Service is an Equal Opportunity Employer.

Executive meetings: second Wednesday, 9am, kitchen conference room; Chapter meetings: last Thursday, Jan thru May: 10am, annex auditorium; June, July, August: member's gardens, 10am; Sept:Pavilion, Discovery Garden, 10am; Oct, Nov: 10am, annex auditorium; (no December meetings)

**Douglas County Master Gardeners of
OSU Extension Service**

Important internet links:

Website: <http://extension.oregonstate.edu/douglas/mg>

Discovery Garden: <http://extension.oregonstate.edu/douglas/discovery-garden>

MG Plant Clinic Email: douglasmg@oregonstate.edu

Steve Renquist Email: steve.renquist@oregonstate.edu

Articles for the November 2009
Newsletter are due Noon
Saturday, October 31 Please
email articles to
Ted Benice
(tbenice@douglasfast.net)

NON-PROFIT ORG
US POSTAGE
PAID
ROSEBURG, OR
PERMIT 57

Douglas County Master Gardeners
PO BOX 1165
Roseburg OR 97470
PH: 672 4461